



Your Last Mile Enabler
Africa and Middle East

Secure Links
to Remote Places

Secure and Reliable Connectivity Solutions

Serving clients in Africa, the Middle East and the United States.



Global Connectivity. Last Mile Delivery. Trusted Local Partnerships.

BringCom is a leading telecommunications service provider offering secure and reliable connectivity solutions to commercial and government customers in Africa, the Caribbean, Latin America, the Middle East and the United States. BringCom owns a teleport in Northern Virginia, USA and manages Djibouti Teleport through a joint venture with Djibouti Telecom. BringCom's international operational knowledge, coupled with extensive local partnerships in the African and Middle Eastern regions, uniquely positions the company to deliver high quality, secure communications services at competitive rates.

BringCom's Services:

- Ethernet Services
- MPLS Services
- DIA Services
- Data Center Services
- NOC Services
- Teleport Services

BringCom's major achievements:

- Provided fiber circuits, Points of Presence (POPs) and satellite-based installations and services (more than 7 Gbps) to clients in more than 38 countries in Africa, Latin America and the Middle East
- Managed more than 1,500 VSAT sites in Africa
- Installed and managed multiple microwave networks for Tier-1 carriers in the US Northeast region

Why work with BringCom:

- 20+ years of Telecommunications Integration Expertise
- End-to-End Quotation all the way to the Last Mile
- Supporting next generation of Networking Services
- Solution-oriented Customer Service

INDUSTRY SOLUTIONS



High Quality, High Availability, Secure Solutions for Commercial and Government Requirements

More businesses are addressing emerging markets and BringCom can expand any customer's communications infrastructure to a global scale. Whether it's in a developing country or uncharted wilderness, BringCom has designed, installed and managed thousands of large and small communications networks all over the world. Our customers include Telcos, Mobile Operators, Multinational Oil and Gas Companies, Mining Enterprises, Logistics Companies, Retailers, Farming Companies, Banks, Non-Governmental Organizations (NGOs) and Government Agencies. We are dedicated to defining the best solution to meet our customers' specific requirements, as well as providing the best installation and management of services. BringCom has a staff with over 100 years of combined experience in VSAT, fiber, microwave and other telecommunications technologies. We understand that no two customers have the same requirements and guarantee that every customer will get the most out of their network. BringCom is also dedicated to servicing the needs of our customers by providing 24x7 support from our Network Operations Center (NOC) located at our Headquarter in Sterling, Virginia. On staff technicians are available to help diagnose and troubleshoot any problems that may occur in your network. We also understand that communication needs are changing and are always available to re-evaluate network requirements.

BringCom can address any vertical market or customer segment; however we specialize in integrating customized communications solutions for the following industries:

- Enterprise
- Government
- Telcos
- Banking/Finance
- Oil and Gas
- Mining
- NGOs



ENTERPRISE SOLUTIONS



Monitored Last Mile Networks for Enterprise Customers

BringCom will meet your Enterprise Connectivity requirements, from broadband Internet access to dedicated International Private Leased Line (IPLS) or Multiprotocol Label Switching (MPLS) connectivity from our teleports or any of our POPs along with back-up and disaster recovery solutions for your business continuity.

Our enterprise clients, whether in the oil and gas, mining, logistics, retail or any industries, are assured of reliable and secure services because our unique expertise with local operations and partners. Our project management of interoperability services and products supports all our customers' needs, whether fiber, satellite, microwave or integrated network.

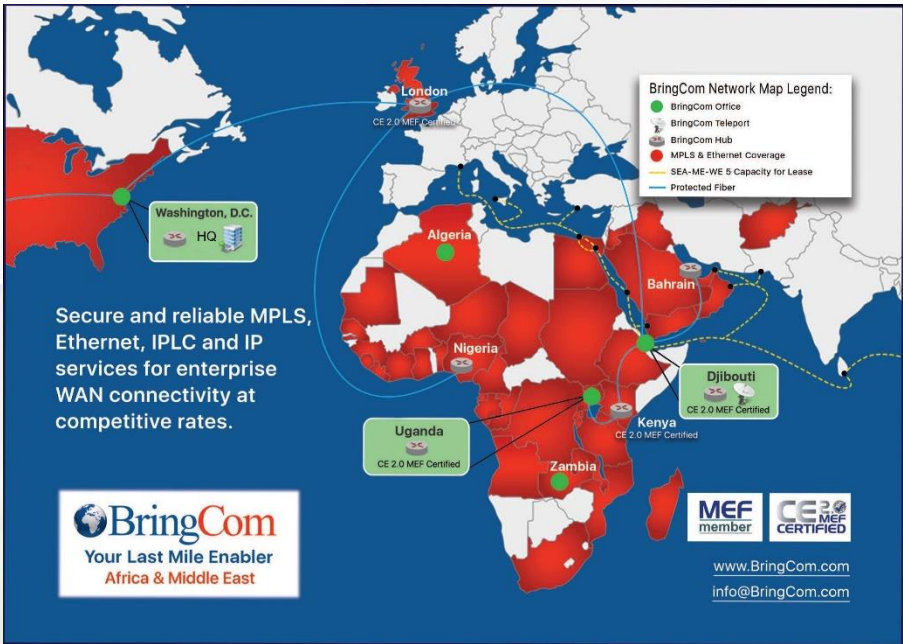
BringCom's enterprise solutions include:

- Fiber circuits, Ethernet and MPLS POPs connectivity, Dedicated Internet Access services
- VSAT products for MESH, STAR (TDMA), Point-to-Point (SCPC) and hybrid configurations
- Microwave and wireless solutions such as WiFi, WiMax and Point-to-Point Microwave networks
- Emergency and mobile services such as quick deploy transportable VSAT networks, Satellite IP phone products and 3G/4G Hotspots
- Disaster Recovery Solution

BringCom also offers custom tailored and fully managed solutions for its enterprise clients, including teleport services, supply and logistics, project management, field service representatives, system integration, Operation & Maintenance (O&M), consulting, training and Network Operation Center (NOC) services.



NETWORK SERVICES



Network Facilities on the Ground and in Space

BringCom operates a substantial network that provides customers with a range of integrated fiber, satellite, microwave or hybrid communications solutions.

Fiber, Ethernet and MPLS POP Services

BringCom offers access to fiber networks across Africa, the Atlantic and throughout the United States. BringCom also has partners in many emerging markets to provide fiber local loop to deliver last mile reliability. BringCom's Ethernet and MPLS POP Services standard components consist of:

- Ethernet POPs in East Africa and Europe
- MPLS POPs in North America, Europe, East Africa and Middle East with SLAs
- Supply, installation, configuration, monitoring, management and maintenance/repair of the router supported by the telecom operator
- 24x7 Help desk support for all IP network connectivity problems

BringCom Djibouti Teleport

BringCom's Djibouti Teleport facility ease of access to Level 1 international fiber connections and Points of Presence (POPs) in Africa and Europe.

Teleport services include:

- 24x7 TT&C and NOC Monitoring
- Hosting, Co-Location, uplink and downlink services
- Satellite IP Platforms such as iDirect and ComTech
- Service Level Agreements (SLAs) for mission or business critical communications

Microwave

BringCom has accumulated more than ten years of experience engineering, installing, operating and maintaining microwave networks in the U.S. and Africa. The company has deployed and operated large microwave networks in the Northeast region of the United States as well as Wi-Fi/WiMax networks in the Western and Southern regions of Africa. Examples of deployments:

- Three (3) x DS3's microwave circuit from Pittsburgh, PA to Clarksburg, MD, USA
- One (1) x OC1 microwave circuit from Sterling, VA to Martinsburg, WV, USA

CAPABILITIES



Global Communications Solutions and Services

- Operates and maintains extensive fiber and microwave networks
- Manages STAR, Mesh, Point-to-Point/SCPC and hybrid services
- System Integration for turn-key new projects in remote areas, as well as re-engineering of legacy systems and O&M
- Consulting and Support for subject-matter specific and training purposes
- 24x7 NOC Services with a Service Desk team
- Follows customized support processes
- Detects, investigates and prioritizes incidents, as well as notifying and consulting customers to resolve incidents
- Manages life-cycle trouble records and mediates with vendors and carriers

Partners and Providers

BringCom's established relationships with "on the ground" local operational partners are a key part of our success – and that of our customers. These local relationships are supported by formal partnerships with iDirect and ComTech, who supply the reliable, high-quality equipment our clients rely on. BringCom is a reseller of fixed satellite service capacity via Apstar, Arabsat, Eutelsat, Intelsat and SES.

Contact BringCom, Inc.

U.S. Headquarters

22636 Davis Drive,
Suite 125,
Sterling, VA 20164
USA

Tel: +1 (703) 709 7902

Teleport NOC-24/7: +1 (703) 668 1141

Email: info@bringcom.com

Email: noc@bringcom.com

Djibouti Teleport

Ambouli Rue Nelson Mandela
Djibouti Telecom
BP2105 Djibouti/Djibouti

Tel: +253 21 329 975

Email: noc@bringcom.com